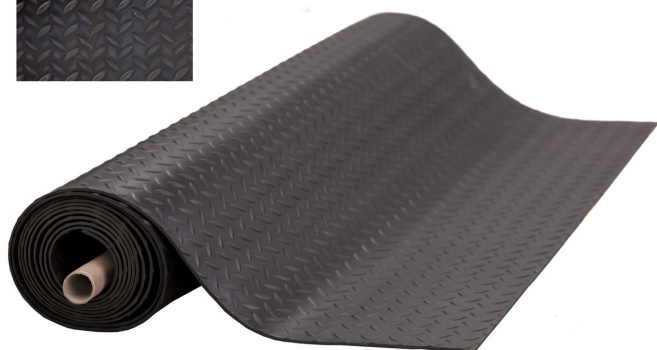
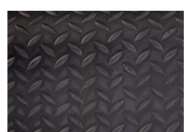


BONDLINE



Heavy Duty ESD Conductive Rubber Matting

KSDIA10 / KSDIAM



Custom sizes available on request.

Standards

Complies with the requirements of BS EN-61340-5.

Electrical Properties & Values

Surface resistance is less than 10^5 ohms per square.

Description

Heavy duty black ESD rubber matting for use in busy areas around machinery such as wave solder machines. This single layer material is highly durable, long-lasting and has a non-slip surface finish. The surface layer is resistant to most oils and acids and is solder splash resistant. These mats are ideally suited to be used in conjunction with already grounded flooring. Can also be grounded via 1 meg ohm lead and stud.

Features

- Non-slip surface finish.
- Single layer rubber material.
- To be used with already grounded flooring.
- Colour - Black.
- Resistant to most oils and acids and is solder splash resistant.
- 4mm thick.

Sizes

Rolls are 1.2m wide x 10m length (4mm thick). Custom sizes available.

- KSDIA10 - 1200mm wide x 10m long. 4mm thick.
- KSDIAM - Per linear meter (1200mm wide).



Important Notice: The information contained within this spec sheet is for guidance only. We make no warranties expressed or implied and assume no liability regarding any use of this information. Heavy Duty ESD Conductive Rubber Matting, January 8th 2020.

