



PCB Storage Rack

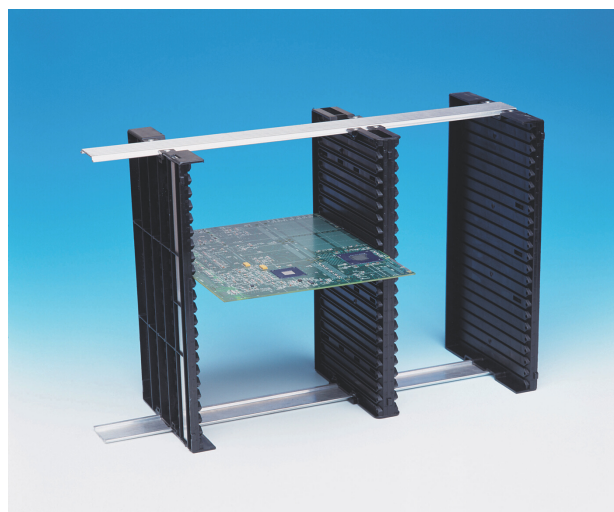
EL31/41/42 and ELF1/2/4/6 range

Description

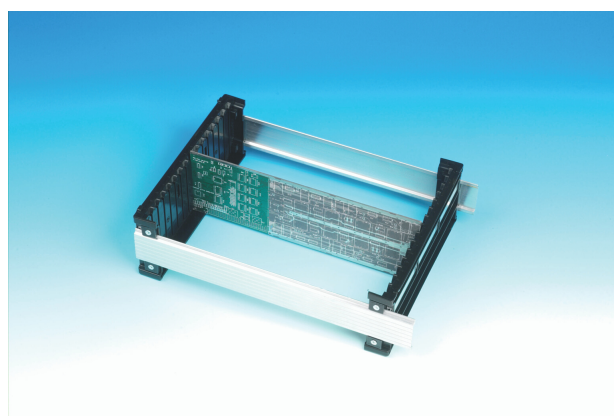
A simple yet very efficient method of storage and transportation of Printed Circuit Boards. Frames are fully adjustable and extremely versatile as they can be used in a vertical, horizontal or flat position. They are made up of 2 end walls located on aluminium rails with the option of a central divider for added capability. These assembled racks will fit perfectly into a standard euro container. End wall is conductive. All items are extremely strong and durable providing exceptional mechanical protection. The conductive properties provide a 'Faraday Cage' static safe environment for static sensitive devices and components.

Key Features

- Carrying frames used in the production, storage and transportation of PCBs.
- Frames are made up of 2 lateral walls located on aluminium rails and with the option of a central wall in between. All aluminium rails are inter-changeable.
- Carrying frames can be built upon to create a custom made PCB storage solution.
- Can be used in vertical, horizontal and flat positions plus if equal in size, can be stacked.
- Made of conductive plastic.
- Slot sizes 2.5mm wide, 3.00mm deep with a 15.3mm pitch.



Large storage rack.



Typical small storage rack.





PCB Storage Rack

EL31/41/42 and ELF1/2/4/6 range

Specifications	
Base Material	Polypropylene copolymer.
Conductive Additive	Carbon black.
Colour	Black.
Density at 23°C	1.04 g/cm ³ .
Chemical Resistance	Excellent (according to the generally valid PP classification).
Vicat Softening Point	154°C ISO 306.
Working Temperature Continuous	Approx 80-100°C. Short term: Approx 100-120°C.
Surface Resistance	Less than 10 ⁴ Ω cm (measured according to CEI EN 61340-2-3 at 20°C with a 5 cm ² ring electrode).
Ageing Behaviour	No deterioration of conductivity (in 7 years of service) no leaching of corrosive substances, excellent UV resistance.

Sizing Options	
Conductive End Wall	Dimensions
EL41	350 x 190 x 30mm
EL31	250 x 95 x 30mm
Pair of Aluminium Rails	Dimensions
ELF4	53 x 352mm long
ELF6	53 x 552mm long
ELF1	53 x 152mm long
ELF2	53 x 232mm long
Conductive Centre Frame (Optional For Large Rack)	Dimensions
EL42	350 x 190 x 35mm



Important Notice: The information contained within this spec sheet is for guidance only. We make no warranties expressed or implied and assume no liability regarding any use of this information. PCB Storage Racks, June 2nd 2020.